

Packing (Section IX)

<u>Part No.</u>	<u>Description</u>	<u>Page No.</u>
3020/3500	"CHEMARES" Tank Lid Packing	3
90	"RAMIE" Flax Packing for the Marine Trade	4
90G	Lubricated "RAMIE" Flax Packing with Graphite	4
90T	Flax Packing with PTFE	5
202	Metallic Packing	5
325NA	Synthetic Fiber, Graphited and Lubricated Packing	6
399	Flexible Graphite Braided Packing	6
651	Carbon Yarn Graphite Filled Packing	7
1200AF	Non-Asbestos High Temperature Valve Stem Packing	7
2280	Heat Resistant Pure PTFE Filament Packing	8
2290	Pure PTFE Filament Packing	8
2500	Synthetic Fiber PTFE Lubricated	9
2777	Synthetic Fiber PTFE Impregnated Packing	9
3100A	Aramid Fiber Packing	10
3300	Expanded PTFE/Graphite	10
400	Pure Flexible Graphite Sheet	11
400F	Flexible Graphite with 316SS Foil Inserted Sheet	11
533N	Non-Asbestos Sheet with NBR Binder	12
533S	Non-Asbestos Sheet with SBR Binder	12
555	Wire Inserted Non-Asbestos Sheet with NBR Binder	13
850	Compressed Carbon Fiber Sheet with NBR Binder	13
600	Red Rubber Sheet	14
610	Pure Gum (Live) Rubber Sheet	14
612	Buna-N Diaphragm Sheet	15
612N	Neoprene Diaphragm Sheet	15
615	Cloth Inserted SBR Sheet	16
624N	Cloth Inserted Nitrile Buna-N Sheet	16
620	Neoprene Sheet	17
624	Nitrile Buna-N Sheet	17
641	Vegetable Fiber Sheet	18
645	Cork and Neoprene Sheet	18
2400	PTFE Sheet	19
700	Viton Sheet	19

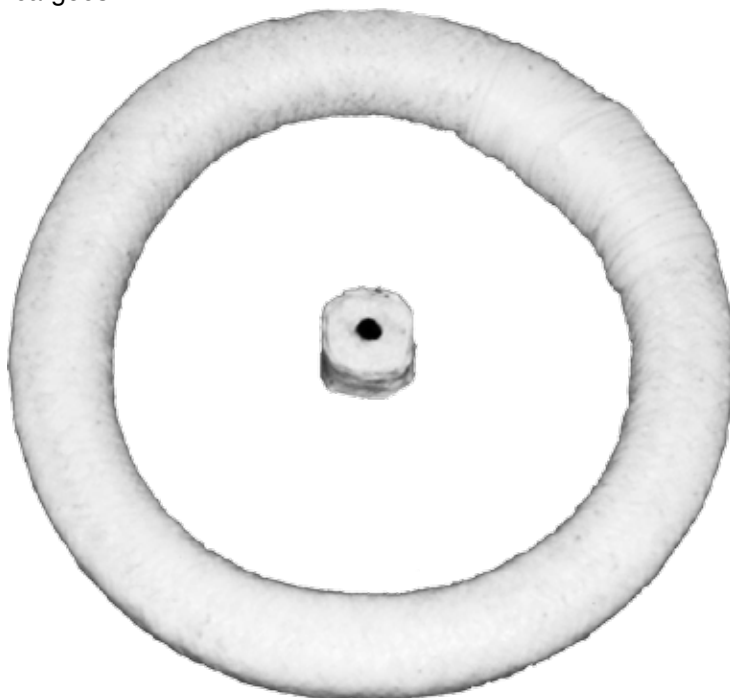


Packing (Section IX) - *continued*

<u>Part No.</u>	<u>Description</u>	<u>Page No.</u>
CCS	Closed Cell Sponge Rubber	20
WPGT	Woven PTFE Gasket Tape	20
ALLVALVE	Expanded PTFE Valve Stem Packing	21
ALLJOINT	Expanded PTFE Joint Sealant	21
RG	Ring Gaskets	22
FFG	Full Face Pipe Flange Gasket	23
RG	Ring Gaskets with Tab	24
	“O” Ring Kits and “O” Ring Cord	25
1000FGC	Fiberglass Cloth	26
1000FGT	Fiberglass Tape	26
1000FGR	Fiberglass Rope	26
SWG	Spiral Wound Gasket	27
	Packing Gasket Cutter	27
	Rubber Switchboard Matting	27
	Anti-Fatigue Grating & Matting	27
	Sticky Back Rubber Strip Packing	27

Style 3020 - CHEMARES TANK LID PACKING

Designed primarily for use at sea, where the prevention of water ingress is as equally important as the prevention of spillage, Style 3020 is just as efficient for use with tank hatches on river-going barges, road and rail transport. 3020 is resistant to acids, alkalis, oils, solvents, chemicals and edible products which makes it suitable for most known cargoes.



Part #	X-Section	ISSA #
3020-15	15mm	
3020-20	20mm	810721
3020-25	25mm	810722
3020-30	30mm	
3020-35	35mm	810723
3020-38	38mm	810724
3020-40	40mm	810725
3020-50	50mm	
3020-20-10	20 x 10mm	
3020-20-15	20 x 15mm	810726
3020-25-10	25 x 10mm	
3020-30-20	30 x 20mm	810727
3020-35-15	35 x 15mm	
3020-35-20	35 x 20mm	
3020-35-25	35 x 25mm	810728
3020-40-30	40 x 30mm	810729
3020-50-30	50 x 30mm	
3020-50-40	50 x 40mm	
3020-55-40	55 x 40mm	

Manufactured for Accord by a world leader in Marine Packings and Gaskets. The unique construction and properties of Style 3020 has made it the outstanding tank lid packing wherever chemical and solvent cargoes are carried.

It was developed in response to a growing demand for a universal tank lid packing, as a result of the dramatic increase in carrying of hazardous bulk liquid cargoes.

Meets your demands. Contains no asbestos. Provides an efficient seal that is resistant to all chemicals likely to be carried. Retains its resilience over many years. Available in both square or rectangular section to suit most tank lids or hatches. Meets all international regulations. Capable of “on-site” welding into a customized endless ring.

Unique construction. The center of 3020 Chemares is a hollow core of special rubber for maximum chemical resistance. Around it is a protective layer of PTFE tape which is then surrounded by a thick cushion of defibrillated polypropylene that has corners constructed from the same materials braided into cords. Over the packing is a double layer of heavy duty PTFE tape with a final outer protection of braided PTFE yarn.

Made to suit your needs. Style 3020 is very flexible and will deform or expand to fill slight irregularities in tank or lid grooves. It is available in square or rectangular section as required and can be supplied in long length coils; ready cut to length; or in customized ready made rings to match your lid specifications.

TEMPERATURE: to 100°C.

No. 90 - "RAMIE" FLAX PACKING FOR THE MARINE TRADE



Larger sizes available on request.

Description: Square braided medium flax fibers paraffin treated and mineral oil lubricated.

Applications: General service packings recommended for cold water, cold oil and brine applications. Stern tubes, rudder posts and tail shaft liners and industrial applications where minimal shaft scoring rates are required.

Service: This packing has extremely low frictional characteristics where minimal shaft wear is essential. Style 90 is rot resistant and ideal for marine use, handling cold water, brine and cold oils.

Temperature Limit: 212°F.

pH Range: 6-8.

Shaft Speed: to 1200 FPM.

Part #	Size	Ft/Lb.	ISSA #
90-180	1/8"	114.0	810201
90-316	3/16"	57.0	810202
90-140	1/4"	34.0	810203
90-516	5/16"	21.0	810204
90-380	3/8"	16.0	810205
90-716	7/16"	10.0	810206
90-120	1/2"	8.5	810207
90-916	9/16"	6.6	810208
90-580	5/8"	5.4	810209
90-340	3/4"	3.9	810211
90-780	7/8"	3.0	810213
90-100	1"	2.4	810215
90-118	1-1/8"	1.8	
90-114	1-1/4"	1.5	810216
90-112	1-1/2"	1.0	

No. 90G - LUBRICATED RAMIE FLAX PACKING WITH GRAPHITE



Larger sizes available on request.

Description: Square braided medium flax fibers paraffin treated with a petroleum based lubricant and graphite.

Applications: General service packings recommended for cold water, salt water, cold oil and brine applications. Stern tubes, rudder posts and tail shaft liners and industrial applications where minimal shaft scoring rates are required.

Service: This packing has extremely low frictional characteristics where minimal shaft wear is essential.

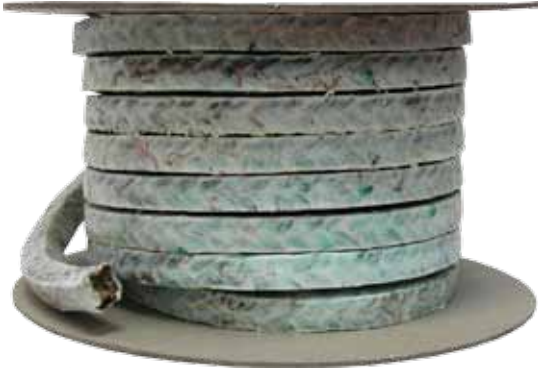
Temperature Limit: 212°F.

pH Range: 6-8.

Shaft Speed: to 1200 FPM.

Part #	Size	Ft/Lb.
90G-180	1/8"	93.0
90G-316	3/16"	53.0
90G-140	1/4"	27.0
90G-516	5/16"	20.0
90G-380	3/8"	15.0
90G-716	7/16"	10.0
90G-120	1/2"	8.3
90G-916	9/16"	6.3
90G-580	5/8"	5.7
90G-340	3/4"	3.8
90G-780	7/8"	2.9
90G-100	1"	2.2
90G-118	1-1/8"	1.8
90G-114	1-1/4"	1.4
90G-112	1-1/2"	1.0

No. 90T - FLAX PACKING WITH PTFE



Larger sizes available on request.

Description: Unique square braided flax fibers impregnated throughout with PTFE to seal the fibers, surface treated with a special break-in lubricant and dry PTFE particles.

Applications: Rotating shafts, stern tubes, rudder posts.

Temperature Limit: to 265°F.

pH Range: 5-11.

Shaft Speed: to 1970 FPM.

Pressure Limit: to 300 PSI in rotary pumps, 450 PSI Static.

Part #	Size	Ft/Lb.	ISSA #
90T-180	1/8"	87.0	810221
90T-316	3/16"	40.0	810222
90T-140	1/4"	23.0	810223
90T-516	5/16"	15.0	810224
90T-380	3/8"	11.5	810225
90T-716	7/16"	8.8	810226
90T-120	1/2"	6.9	810227
90T-916	9/16"	5.3	810228
90T-580	5/8"	4.4	810229
90T-340	3/4"	3.1	810231
90T-780	7/8"	2.5	810233
90T-100	1"	1.8	810235
90T-118	1-1/8"	1.4	
90T-114	1-1/4"	1.2	
90T-112	1-1/2"	0.8	

No. 202 - METALLIC PACKING



Larger sizes available on request.

Description: Thin layers of alloy lead foil are wrapped, layer over layer around proprietary fiber core to provide added resilience. Treated with high temperature oil and graphite. Suited for water, oil, steam, etc.

Applications: Centrifugal and reciprocating shafts, valves.

Temperature Limit: to 500°F.

pH Range: 4 - 10.

Part #	Size	Ft/Lb.	ISSA #
202-180	1/8"	16.0	810281
202-316	3/16"	10.0	810282
202-140	1/4"	7.3	810283
202-516	5/16"	4.5	810284
202-380	3/8"	3.3	810285
202-716	7/16"	2.5	810286
202-120	1/2"	2.0	810287
202-916	9/16"	1.8	810288
202-580	5/8"	1.3	810289
202-340	3/4"	1.0	810291

No. 325NA - SYNTHETIC FIBER, GRAPHITED AND LUBRICATED PACKING



Larger sizes available on request.

Description: An interlock braid using carded synthetic yarns thoroughly impregnated with a special petroleum based lubricant and graphite.

Applications: General service packing that adapts well to worn or scored shafts often found in older equipment. It assures an excellent seal against steam, brine, oil and mild acids and alkalis. Well suited for rotary and centrifugal pumps and some valves.

Temperature Limit: to 340°F.

pH Range: 4 - 10.

Shaft Speed: to 2000 FPM.

Part #	Size	Ft/Lb.	IMPA #
325NA-180	1/8"	124.0	810546
325NA-316	3/16"	64.0	810547
325NA-140	1/4"	35.0	810548
325NA-516	5/16"	23.0	810549
325NA-380	3/8"	15.0	810550
325NA-716	7/16"	12.0	810551
325NA-120	1/2"	9.6	810552
325NA-916	9/16"	7.4	810553
325NA-580	5/8"	5.6	810554
325NA-340	3/4"	4.0	810556
325NA-780	7/8"	3.1	810558
325NA-100	1"	2.3	810559

No. 399 - FLEXIBLE GRAPHITE BRAIDED PACKING



Larger sizes available on request.

Description: A braided yarn that is expanded and formed into a braidable yarn and then braided without binders. This packing is heat resistant, chemical inert, low friction, self lubricating and ready to conform.

Applications: A multi-service packing capable of a wide variety of uses throughout a plant. Used in valves, pumps, expansion joints, mixers, agitators where effective sealing is vital.

Temperature Limit: 840°F in air, 1200°F in steam.

pH Range: 0-14 (except strong oxidizers).

Shaft Speed: to 3900 FPM.

PN: 399I, also available with Inconel wire reinforcement.

Part #	Size	Ft/Lb.
399-180	1/8"	114.0
399-316	3/16"	71.0
399-140	1/4"	40.0
399-516	5/16"	26.0
399-380	3/8"	18.0
399-716	7/16"	13.0
399-120	1/2"	9.9
399-916	9/16"	7.9
399-580	5/8"	4.8
399-340	3/4"	4.7
399-780	7/8"	3.7
399-100	1"	3.1

No. 651 - CARBON YARN GRAPHITE FILLED PACKING



Larger sizes available on request.

Description: Manufactured from pure carbon yarn which is interlock braided and impregnated with lubricants and graphite particles which fill voids, block leakage and act as a break-in lubricant. Low coefficient of friction and tends to wear more evenly than most braided packings.

Applications: Handles water, steam, boiler feed, and aqueous solutions of acids and alkalis. In service it seats quickly and does not require break-in adjustments. Commonly used for high speed pumps, blowers, dryers, high temperature valves and furnace gasketing.

Temperature Limit: 800°F in air, 1110°F in steam.

pH Range: 0-14 (except strong oxidizers).

Shaft Speed: to 3900 FPM.

PN: 651I, also available with wire reinforcement.

Part #	Size	Ft/Lb.
651-180	1/8"	135.0
651-316	3/16"	59.0
651-140	1/4"	33.0
651-516	5/16"	22.0
651-380	3/8"	15.0
651-716	7/16"	11.0
651-120	1/2"	8.4
651-916	9/16"	6.6
651-580	5/8"	5.4
651-340	3/4"	3.7
651-780	7/8"	2.7
651-100	1"	2.1

No. 1200AF - NON-ASBESTOS HIGH TEMPERATURE VALVE STEM PACKING



Larger sizes available on request.

Description: Style 1200AF is interlock braided, using a special high-temperature fiber glass, reinforced with Inconel® and heavily lubricated with graphite.

Applications: General valves, control valves, rods, expansion joints.

Service: 1200AF is a firm, high density, non-asbestos packing. It is recommended for use in steam, most chemicals, mild acids and alkalies.

Temperature Limit: to 1200°F.

pH Range: 2-12.

Shaft Speed: to 200 FPM.

Pressure Limit: to 2500 PSI, Static.

Part #	Size	Ft/Lb.	IMPA #
1200AF-180	1/8"	87.5	810581
1200AF-316	3/16"	39.2	810582
1200AF-140	1/4"	25.7	810583
1200AF-516	5/16"	19.1	810584
1200AF-380	3/8"	10.9	810585
1200AF-716	7/16"	8.8	810586
1200AF-120	1/2"	6.6	810587
1200AF-916	9/16"	5.9	810588
1200AF-580	5/8"	4.2	810589
1200AF-340	3/4"	2.9	810591
1200AF-780	7/8"	2.2	810593
1200AF-100	1"	1.8	810595

No. 2280 - HEAT RESISTANT PURE PTFE FILAMENT PACKING



Larger sizes available on request.

Description: Interlock braid, using pure PTFE filament pre-treated with PTFE dispersion plus a break-in lubricant to reduce the friction coefficient and the frictional heat created under high shaft speeds.

Applications: Valve stems, expansion joints, rotary and reciprocating shafts, mixers, agitators and reactors.

Service: Style 2280 is designed pliable and soft, yet dimensionally stable - which has excellent lubricant and running characteristics. It is suited for high speed rotary shaft service, and handles most chemicals, solvents and gases with exception to molten alkali metals.

Temperature Limit: to 540°F.

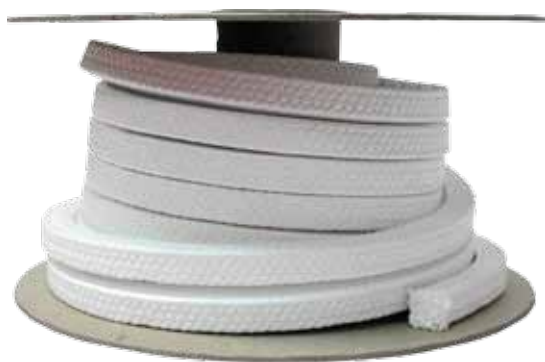
pH Range: 0-14.

Shaft Speed: to 2350 FPM.

Pressure Limit: 435 PSI in rotary pumps, 1450 PSI Static.

Part #	Size	Ft/Lb.	ISSA #
2280-180	1/8"	82.7	810401
2280-316	3/16"	33.8	810402
2280-140	1/4"	21.0	810403
2280-516	5/16"	14.6	810404
2280-380	3/8"	10.0	810405
2280-716	7/16"	7.3	810406
2280-120	1/2"	5.4	810407
2280-916	9/16"	4.3	810408
2280-580	5/8"	3.4	810409
2280-340	3/4"	2.4	810411
2280-780	7/8"	1.9	810413
2280-100	1"	1.5	810414

No. 2290 - PURE PTFE FILAMENT PACKING



Larger sizes available on request.

Description: 2290 is a firm and dense packing that is tightly woven to eliminate large voids. Each filament is thoroughly impregnated with PTFE dispersion before braiding. This serves as a sealant between individual fibers to prevent any leaking through the braid structure. Through a bleaching and shrinking process, all carbonaceous material has been removed and greater dimensional stability has been attained.

Applications: Designed for valves, expansion joints, reciprocating and rotary shafts handling corrosive chemicals, solvents, and gases, with exception of molten alkali metals.

Service: Especially suited for services where no organic materials or lubricants other than PTFE are allowed.

Temperature Limit: to 540°F.

pH Range: 0-14.

Shaft Speed: to 1000 FPM.

Pressure Limit: 215 PSI in rotary pumps, 3600 PSI Static.

Part #	Size	Ft/Lb.
2290-180	1/8"	87.5
2290-316	3/16"	40.2
2290-140	1/4"	21.3
2290-516	5/16"	14.9
2290-380	3/8"	9.4
2290-716	7/16"	7.8
2290-120	1/2"	5.5
2290-916	9/16"	4.4
2290-580	5/8"	3.6
2290-340	3/4"	2.7
2290-780	7/8"	2.0
2290-100	1"	1.6

No. 2500 - SYNTHETIC FIBER PTFE LUBRICATED



Larger sizes available on request.

Description: Interlock braided synthetic fiber treated with PTFE impregnation lubricated with a unique lubrication process that changes each individual fiber into a reservoir of lubrication for longer packing life.

Applications: Steam, water, acid, chemical and solvent applications. Excellent where nonstaining, high speed, and non-abrasive packing is required.

Service: Pumps, rotary, and centrifugal equipment.

Temperature Limit: to 450°F.

pH Range: 2-12.

Shaft Speed: to 2350 FPM.

Part #	Size	Ft/Lb.	ISSA #
2500-180	1/8"	70.9	810421
2500-316	3/16"	41.3	810422
2500-140	1/4"	24.0	810423
2500-516	5/16"	17.5	810424
2500-380	3/8"	12.2	810425
2500-716	7/16"	8.5	810426
2500-120	1/2"	6.8	810427
2500-916	9/16"	5.6	810428
2500-580	5/8"	4.4	810429
2500-340	3/4"	3.0	810431
2500-780	7/8"	2.3	810433
2500-100	1"	1.8	810434

No. 2777 - SYNTHETIC FIBER PTFE IMPREGNATED PACKING



Larger sizes available on request.

Description: Interlock braid synthetic fibers impregnated with PTFE. The individual fibers are lubricated using a special process that assures thorough lubrication for a longer packing life. This is a high performance packing well suited to applications where graphite impregnation may not be acceptable

Applications: This packing can handle steam, water, acids and other chemical and solvent applications. Regularly used in chemical plants with reciprocating pumps.

Temperature Limit: to 500°F.

pH Range: 1-13 (except concentrated, hot sulfuric or nitric acid).

Shaft Speed: to 1950 FPM.

Part #	Size	Ft/Lb.
2777-140	1/4"	20.0
2777-516	5/16"	14.2
2777-380	3/8"	11.1
2777-716	7/16"	9.1
2777-120	1/2"	6.3
2777-916	9/16"	5.6
2777-580	5/8"	4.0
2777-340	3/4"	2.9
2777-780	7/8"	2.2
2777-100	1"	1.8

No. 3100A - SPUN ARAMID FIBER PACKING



Larger sizes available on request.

Description: Spun interlock braid using aramid filaments treated individually with PTFE suspenoid. The packing is also lubricated with a silicon-based compound for quick and easy break-in.

Applications: Centrifugal, rotary and reciprocating pumps, valves.

Service: 3100 is a durable packing able to withstand granular and abrasive applications. It is recommended for service in superheated steam, slurries, petroleum derivatives, solvents, chemicals and liquid gases.

Temperature Limit: to 540°F.

pH Range: 2-12.

Shaft Speed: to 2950 FPM.

**** Note:** Available in plain braided aramid fiber with PTFE lubricant, PN: 3100.

Part #	Size	Ft/Lb.	ISSA #
3100A-180	1/8"	78.0	810565
3100A-316	3/16"	42.0	810566
3100A-140	1/4"	27.0	810567
3100A-516	5/16"	16.0	810568
3100A-380	3/8"	11.0	810569
3100A-716	7/16"	8.5	810571
3100A-120	1/2"	6.4	810572
3100A-916	9/16"	5.2	810573
3100A-580	5/8"	4.2	810574
3100A-340	3/4"	3.0	810576
3100A-780	7/8"	2.1	810578
3100A-100	1"	1.7	810579

No. 3300 - EXPANDED PTFE/GRAPHITE



Larger sizes available on request.

Description: Interbraided PTFE/Graphite fiber, graphite particles encapsulated in an expanded PTFE matrix. Recommended for corrosive services that are suitable for graphite/PTFE.

Applications: Reciprocating and rotary shafts, valve stems.

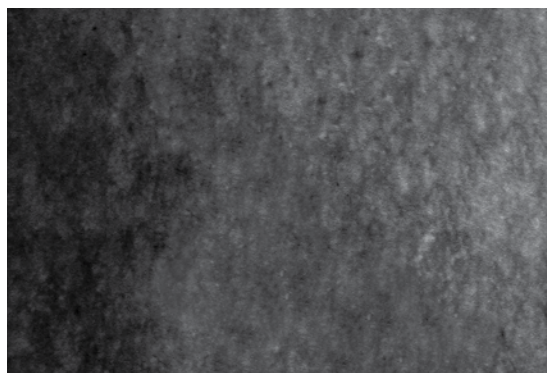
Temperature Limit: to 540°F.

pH Range: 0-14.

Shaft Speed: to 4900 FPM.

Part #	Size	Ft/Lb.
3300-180	1/8"	87.5
3300-316	3/16"	38.2
3300-140	1/4"	22.2
3300-516	5/16"	15.7
3300-380	3/8"	10.3
3300-716	7/16"	8.1
3300-120	1/2"	5.9
3300-916	9/16"	4.5
3300-580	5/8"	3.7
3300-340	3/4"	2.5
3300-780	7/8"	2.0
3300-100	1"	1.6

No. 400 - PURE FLEXIBLE GRAPHITE



Description: A flexible graphite sheet. The expanded graphite flake particles are mechanically locked together and adhesive bonded and laminated to the required thickness.

Service: Flexible graphite sheet has pressure-temperature sealability capabilities that are far superior to reinforced non-asbestos sheet products. It is resistant to chemical attack by virtually all organic and inorganic fluids with the exception of concentrated, highly oxidizing acids. Gaskets cut from flexible graphite sheet seal with low to moderated bolt loads and conform to irregular flange sealing surfaces with both smooth and coarse surface finishes.

Temperature Limit: -328°F to 900°F air, 1200°F steam.

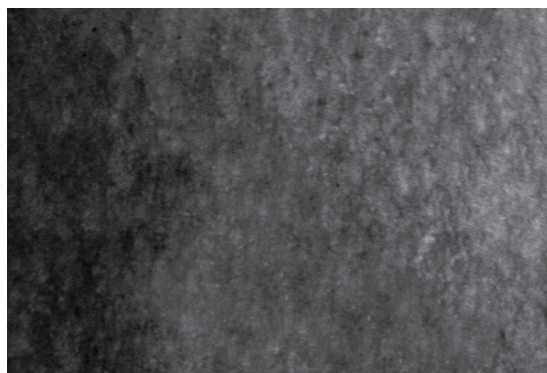
Pressure Limit: 2000 PSI.

Sheet Size: 39.4" x 39.4".

Tensile: 50 PSI.

Part #	Size
400-164	1/64"
400-132	1/32"
400-116	1/16"
400-180	1/8"

No. 400F - FLEXIBLE GRAPHITE WITH 316SS FOIL INSERTED



Description: A flexible graphite sheet reinforced with a 316SS foil. The expanded graphite flake particles are locked together and bonded and laminated to the 316SS foil core in the center.

Service: Flexible graphite sheet has pressure-temperature sealability capabilities that are far superior to reinforced non-asbestos sheet products. It is resistant to chemical attack by virtually all organic and inorganic fluids with the exception of concentrated, highly oxidizing acids. Gaskets cut from flexible graphite sheet seal with low to moderated bolt loads and conform to irregular flange sealing surfaces with both smooth and coarse surface finishes.

Temperature Limit: -328°F to 900°F air, 1800°F steam.

Pressure Limit: 2000 PSI.

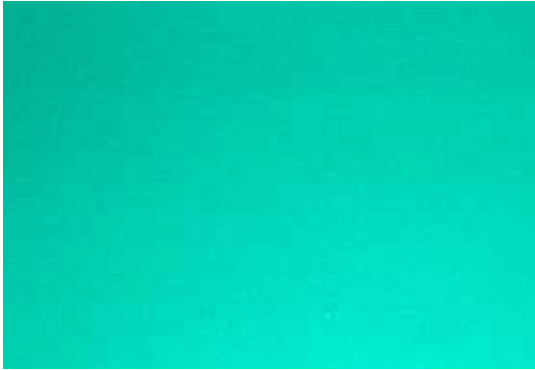
Sheet Size: 39.4" x 39.4".

Tensile: 5000 PSI.

Part #	Size	ISSA #
400F-132	1/32"	811026
400F-116	1/16"	811027
400F-180	1/8"	811029

Available with 316SS wire insert, PN: 400W

No. 533N - NON-ASBESTOS SHEET WITH NBR BINDER



Description: A compressed non-asbestos sheet gasket produced from aramid and synthetic fibers bonded with NBR.

Service: Water, brine, mild acids, alkalis, air, oil, solvents, and refrigerants.

Temperature Limit: -40°F to 750°F.

Pressure Limit: 1370 PSI.

Length: 59" x 63", Larger sizes available upon request.

Part #	Size	ISSA #
533N-164	1/64"	811071
533N-132	1/32"	811072
533N-116	1/16"	811074
533N-332	3/32"	811075
533N-180	1/8"	811076
533N-316	3/16"	--
533N-140	1/4"	--

No. 533S - NON-ASBESTOS SHEET WITH SBR BINDER



Description: A compressed non-asbestos sheet gasket produced from aramid and synthetic fibers bonded with SBR.

Service Media: Water, brine, mild acids, alkalis, saturated steam, air, and refrigerants.

Temperature Limit: -40°F to 720°F.

Pressure Limit: 1015 PSI.

Length: 59" x 63", Larger sizes available upon request.

Part #	Size
533S-164	1/64"
533S-132	1/32"
533S-116	1/16"
533S-332	3/32"
533S-180	1/8"

No. 555 - WIRE INSERTED NON-ASBESTOS SHEET WITH NBR BINDER



Description: A compressed non-asbestos sheet gasket produced from aramid and synthetic fibers reinforced with a woven wire mesh and bonded with NBR. Recommended for sealing applications where temperature and pressure fluctuate.

Service: Saturated steam, water, brine, mild acids, alkalis, oils, solvents, and refrigerants.

Temperature Limit: -40°F to 720°F.

Pressure Limit: 1450 PSI.

Length: 59" x 63", Larger sizes available upon request.

Available with or without graphite on both sides.

Part #	Size
555-132	1/32"
555-116	1/16"
555-332	3/32"
555-180	1/8"

No. 850 - COMPRESSED CARBON FIBER SHEET WITH NBR BINDER



Description: A compressed non-asbestos sheet gasket produced from carbon and graphite bonded with NBR

Service: Saturated steam, water, brine, mild acids, alkalis, air, oils, solvents, and refrigerants.

Temperature Limit: -40°F to 840°F.

Pressure Limit: 1900 PSI.

Length: 59" x 63", Larger sizes available upon request.

Part #	Size
850-164	1/64"
850-132	1/32"
850-116	1/16"
850-332	3/32"
850-180	1/8"

No. 600 - RED RUBBER SHEET



Description: Remains pliable under service conditions and has low flow under bolting pressures. This compound does not readily creep or blow out under normal temperatures or pressures.

Service: An exceptionally good material for use against hot or cold water, air and low pressure saturated steam, not exceeding 50 PSI.

Color: Red.

Tensile: 400 PSI.

Temperature Limit: -20°F to 180°F.

ASTM: D-2000.

* **Note:** Sheets can be cut to length.

Part #	Size
600-116	1/16"
600-332	3/32"
600-180	1/8"
600-316	3/16"
600-140	1/4"

No. 610 - PURE GUM (LIVE) RUBBER SHEET



Description: Pure vegetable rubber compound for softness and tensile strength. An excellent sealing material for applications involving light bolt pressures or extreme flange irregularities.

Service: Hot or cold water, aqueous solutions (except concentrated Sulfuric acid and Nitric acid).

Color: Tan.

Tensile: 1700 PSI.

Temperature Limit: -20°F up to 140°F.

ASTM: D-2000.

* **Note:** Sheets can be cut to length.

Part #	Size	ISSA #
610-116	1/16"	811112
610-332	3/32"	811113
610-180	1/8"	811114
610-316	3/16"	811116
610-140	1/4"	811117
610-380	3/8"	811119
610-120	1/2"	811120
610-580	5/8"	811121
610-340	3/4"	811122

No. 612 - BUNA-N DIAPHRAGM SHEET



Part #	Size
612-116	1/16"
612-332	3/32"
612-180	1/8"
612-316	3/16"
612-140	1/4"

Description: A high quality nitrile sheet with nylon.

Service: This diaphragm sheet is suitable for oil, grease and solvent services.

Color: Black.

Durometer: 60.

Tensile: 1000 PSI.

Temperature Limit: -20°F to 200°F.

ASTM: D-2000.

*** Note:** Sheets can be cut to length.

No. 612N - NEOPRENE DIAPHRAGM SHEET



Part #	Size	ISSA #
612N-116	1/16"	811162
612N-332	3/32"	811163
612N-180	1/8"	811164
612N-316	3/16"	811166
612N-140	1/4"	811167

Description: This neoprene sheet is reinforced with cotton duck plies providing structural strength to the material.

Service: A strong, flexible, oil-resistant diaphragm material designed to transmit pulsation's between gases, air and fluids.

Color: Black.

Durometer: 60.

Tensile: 1000 PSI.

Temperature Limit: -40°F to 220°F.

ASTM: D-2000.

*** Note:** Sheets can be cut to length.

No. 615 - CLOTH INSERTED SBR SHEET



Description: Manufactured from high quality fabric and rubber compounds for service where ordinary rubber gaskets may creep.

Service: Hot or cold water, air, gas, low pressure steam and hydraulic equipment service. For general gasket use where movement in service, bolts, clamps, and pressures require reinforced rubber sheet.

Color: Black.

Durometer: 70.

Tensile: 450 PSI.

Elongation: 200%.

Temperature Limit: -20°F to 200°F.

ASTM: D-2000.

*** Note:** Sheets can be cut to length.

Part #	Size
615-132	1/32"
615-116	1/16"
615-332	3/32"
615-180	1/8"
615-316	3/16"
615-140	1/4"

No. 624N - CLOTH INSERTED BUNA-N SHEET



Description: Manufactured from high quality fabric and Buna-N Rubber is a copolymer of acrylonitrile and butadiene.

Service: This sheet has excellent resistance to most petroleum oils and greases, gasoline, alcohols, L-P gases, fuels oils and many other fluids. It has good abrasion resistance. Used where neoprene compounds tend to swell.

Color: Black.

Durometer: 65.

Tensile: 700 PSI.

Temperature Limit: -20°F to 200°F.

ASTM: D-2000.

*** Note:** Sheets can be cut to length.

Part #	Size
624N-132	1/32"
624N-116	1/16"
624N-332	3/32"
624N-180	1/8"
624N-316	3/16"
624N-140	1/4"

No. 620 - NEOPRENE SHEET



Description: Compounded of neoprene and carbon black compounds formulated to resist action of oils and solvents. This sheet will give minimum flow under bolting pressures, yet has sufficient recovery to maintain a seal for prolonged periods.

Service: Oils, hot or cold water, non-aromatic petroleum derivatives, fatty oils and solvents, except chlorinated, aromatic or ketone types.

Color: Black.

Durometer: 60.

Tensile: 1000 PSI.

Temperature Limit: -20°F to 170°F.

ASTM: D-2000.

* **Note:** Sheets can be cut to length.

Part #	Size	ISSA #
620-132	1/32"	811131
620-116	1/16"	811132
620-332	3/32"	811133
620-180	1/8"	811134
620-316	3/16"	811136
620-140	1/4"	811137
620-380	3/8"	811139
620-120	1/2"	811140
620-340	3/4"	--
620-100	1"	--

No. 624 - NITRILE BUNA-N SHEET



Description: Nitrile Rubber (Buna-N) is a copolymer of acrylonitrile and butadiene. It has good abrasion resistance.

Service: This sheet has excellent resistance to most petroleum oils and greases, gasoline, alcohols, L-P gases, fuels oils and many other fluids. Used where neoprene compounds tend to swell or where higher temperatures are encountered in conjunction with oils or solvents.

Color: Black.

Durometer: 65.

Tensile: 700 PSI.

Temperature Limit: -20°F to 170°F.

ASTM: D-2000.

* **Note:** Sheets can be cut to length.

Part #	Size	ISSA #
624-132	1/32"	811131
624-116	1/16"	811132
624-332	3/32"	811133
624-180	1/8"	811134
624-316	3/16"	811136
624-140	1/4"	811137

No. 641 - VEGETABLE FIBER SHEET



Description: Manufactured from tough Vegetable fiber impregnated with a chemical binder to resist the penetration of liquids. It is heavily compressed during manufacture to close tolerances.

Service: Designed especially for use against gasoline, oil, benzene, grease, hot and cold water.

Color: Beige - Brown.

Temperature Limit: 250°F Maximum.

*** Note:** Conforms to government specifications 33-P-22 and HH-P-96.

Part #	Size	ISSA #
641-132	1/32"	811084
641-116	1/16"	811086
641-332	3/32"	811087
641-180	1/8"	811088
641-316	3/16"	--
641-140	1/4"	--

No. 645 - CORK AND NEOPRENE SHEET



Description: The material offers exceptional resiliency and conformability.

Service: Cork/neoprene manufactured sheet material is resistant to oils, fuels, weather and water.

Color: Brown.

Temperature Limit: 275°F Maximum.

Pressure Limit: 300 PSI.

*** Note:** Conforms to government specifications MIL-C-6183A and ASTM F 104 F227000M1.

Part #	Size	ISSA #
645-132	1/32"	811001
645-116	1/16"	811002
645-332	3/32"	811003
645-180	1/8"	811004
645-316	3/16"	--
645-140	1/4"	--

No. 2400 - PTFE SHEET



Description: Inert to almost all chemicals, it cannot be dissolved, and exhibits no moisture absorption. It is best known for its chemical resistance. Electrical properties are excellent. PTFE has an extremely low coefficient of friction. Very few materials will stick to it.

Service: Can handle virtually all chemicals with the exception of molten alkali metals and elemental fluorine.

Color: White.

Size: 48" x 48", 60" x 60", additional sizes upon request.

Temperature Limit: -328°F to +500°F.

Tensile: 1500 PSI

Part #	Size	ISSA #
2400-164	1/64"	--
2400-132	1/32"	812541
2400-116	1/16"	812542
2400-332	3/32"	--
2400-180	1/8"	812543
2400-316	3/16"	812544
2400-140	1/4"	812545

No. 700 - VITON SHEET



Description: VITON® (FLUOROELASTOMERS) are high technology elastomers designed for extreme heat, oil and chemical resistance. Commercial grade. Smooth plate finish or light fabric finish. 75 Duro.

Service: Products are nearly equal to silicone materials in heat resistance while resisting aliphatic aromatic and halogenated hydrocarbons, concentrated acids and alkalis, also animal and vegetable oils.

Color: Black.

Size: 36" x 36", other sizes available upon request.

Temperature Limit: -10°F to 450°F constant, 500°F intermittently.

Tensile: 1000 PSI Minimum

* **Note:** Rolls available upon request.

® Viton is a DuPont Trademark.

Also available with cloth insert, PN: 700CI.

Part #	Size
700-132	1/32"
700-116	1/16"
700-332	3/32"
700-180	1/8"
700-316	3/16"
700-140	1/4"

No. CCS - CLOSED CELL SPONGE RUBBER



Description: Natural rubber closed cell sponge.

Service: Sealing water tight doors. Excellent for insulating sound and vibration, dampening, and shock absorbing.

Color: Black.

Size: 36", additional sizes upon request.

Temperature Limit: -40°F to +160°F.

Tensile: 1500 PSI Minimum

Available in sheet or rubber strips cut to order.

Part #	Size
CCS-180	1/8"
CCS-316	3/16"
CCS-140	1/4"
CCS-380	3/8"
CCS-120	1/2"
CCS-580	5/8"
CCS-340	3/4"
CCS-100	1"

No. WPGT - WOVEN PTFE GASKET TAPE



Description: Woven PTFE yarns in a flat, tube-like construction, which is impregnated with PTFE and can be treated with an inert lubricant (No. WPGT WET) or furnished without the lubricant (No. WPGT DRY)

Service Media: It can handle virtually any chemical service with the exception of molten alkali metals. Commonly used for sealing flanges and vessel tank lids.

Temperature Limit: 500°F

Pressure Limit: 360 PSI

pH Range: 0 - 14, except molten alkali metals.

Part #	Width	Thickness	Ft./Lb.	Thickness	Ft./Lb.
WPGT-120-WET	1/2"	1/8"	20.5	1/4"	--
WPGT-340-WET	3/4"	1/8"	13.5	1/4"	6.7
WPGT-100-WET	1"	1/8"	10.0	1/4"	5.0
WPGT-114-WET	1-1/4"	1/8"	8.0	1/4"	4.0
WPGT-112-WET	1-1/2"	1/8"	7.6	1/4"	3.8
WPGT-200-WET	2"	1/8"	--	1/4"	2.5
WPGT-120-DRY	1/2"	1/8"	18.5	1/4"	--
WPGT-340-DRY	3/4"	1/8"	12.5	1/4"	6.6
WPGT-100-DRY	1"	1/8"	9.4	1/4"	4.7
WPGT-114-DRY	1-1/4"	1/8"	7.4	1/4"	3.7
WPGT-112-DRY	1-1/2"	1/8"	6.1	1/4"	3.1
WPGT-200-DRY	2"	1/8"	--	1/4"	2.3

No. ALLVALVE - EXPANDED PTFE VALVE STEM PACKING



Description: 100% virgin expanded PTFE which in a braid-over-core construction with a round cross section. This construction produces a firm but conformable packing that handles high pressures.

Service Media: Easily conforms to worn valve stems and stuffing boxes, yet forms a very high density packing when compressed.

Temperature Limit: 600°F

Pressure Limit: 1450 PSI

pH Range: 0 - 14, except molten alkali metals and elemental fluorine.

Part #	Size	Spool Lengths	Recommended Size for Flange ID
ALLVALVE-116	1/16"	50'	1/8" to 1"
ALLVALVE-332	3/32"	25', 50'	1/8" to 1"
ALLVALVE-180	1/8"	25'	1-1/2" to 3"
ALLVALVE-532	5/32"	25'	1-1/2" to 3"
ALLVALVE-316	3/16"	25'	3-1/2" to 6"
ALLVALVE-732	7/32"	15'	3-1/2" to 6"
ALLVALVE-140	1/4"	12'	8" to 12"
ALLVALVE-932	9/32"	9'	8" to 12"
ALLVALVE-516	5/16"	7'	8" to 12"
ALLVALVE-380	3/8"	7'	also available
ALLVALVE-120	1/2"	12'	also available
ALLVALVE-580	5/8"	9'	also available

No. ALLJOINT - EXPANDED PTFE JOINT SEALANT



Description: 100% virgin expanded PTFE which is much more flexible than regular PTFE and conforms to irregular and rough surfaces. This material is easier to compress and exhibits excellent resistance to creep and cold flow. Joint sealant is supplied as a continuous tape with a self-adhesive backing strip to facilitate easy installation.

Service Media: Because it is composed of 100% PTFE, it can handle virtually all chemicals in the 0-14 pH range. Water, air, sealing of flanges, heat exchangers.

Temperature Limit: 600°F

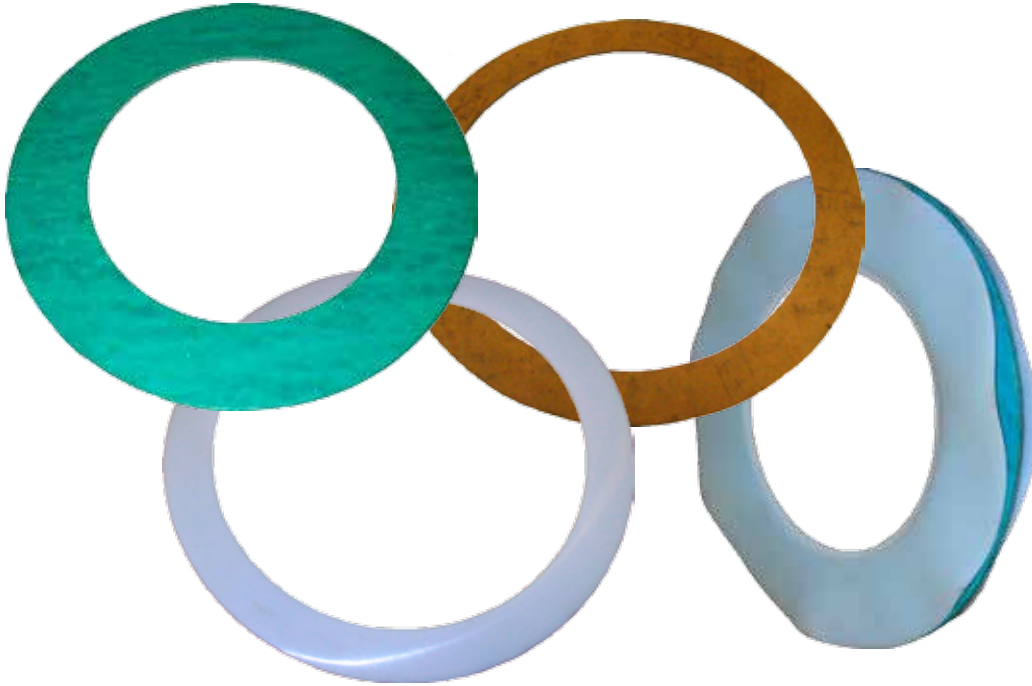
Pressure Limit: 2900 PSI

pH Range: 0 - 14, except molten alkali metals and elemental fluorine.

Part #	Size	Spool Lengths	Recommended Size for Flange ID
ALLJOINT-180	1/8"	50', 100', 500'	up to 1/2"
ALLJOINT-316	3/16"	75', 150', 750'	3/4" to 1-1/2"
ALLJOINT-140	1/4"	50', 100', 500'	2" to 4"
ALLJOINT-380	3/8"	25', 50', 250'	5" to 8"
ALLJOINT-120	1/2"	15', 30', 150'	10" to 16"
ALLJOINT-580	5/8"	15', 30', 150'	18" to 24"
ALLJOINT-340	3/4"	15', 30', 100'	24" to 36"
ALLJOINT-100	1"	15', 30', 75'	36" and above

No. RG - RING GASKETS

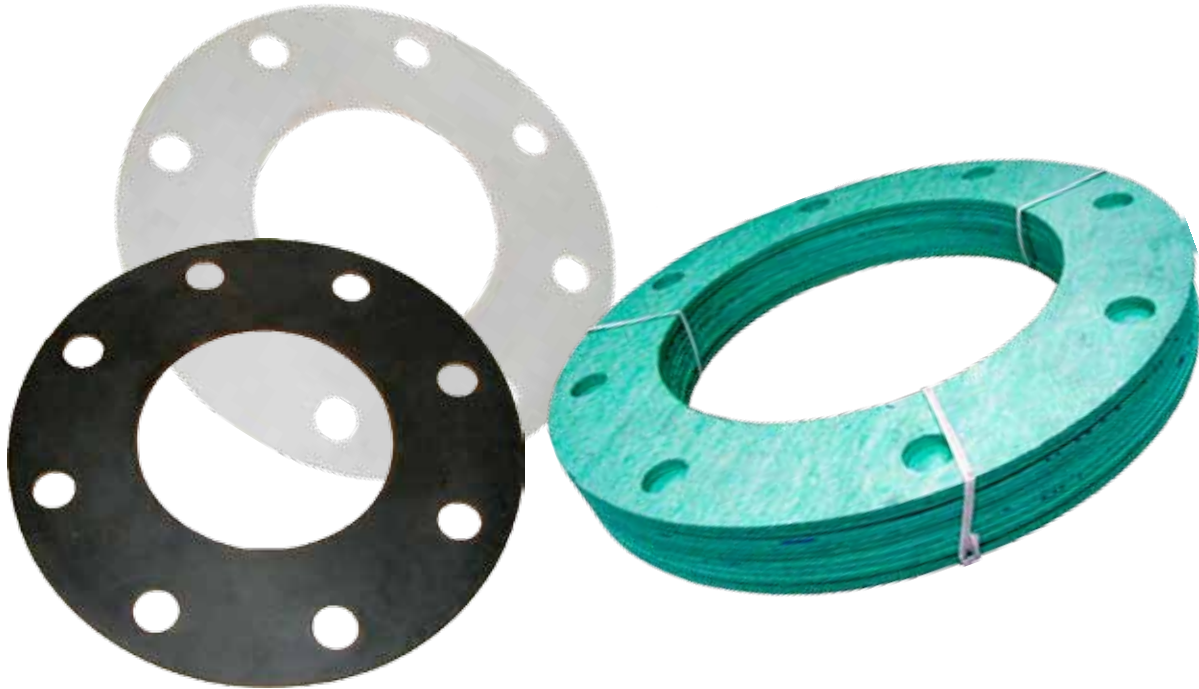
Standard thickness is 1/8", also available in 1/16" please specify when ordering.
 Additional ring gasket materials are available, but not listed on this page.



Nominal Pipe Size	150# ring gasket ID	150# ring gasket OD	Non-Asbestos Part #:	Teflon Envelope with Filler Part #:
1/2"	27/32"	1-7/8"	RG-150NA-050	RG-TEF-050
3/4"	1-1/16"	2-1/4"	RG-150NA-075	RG-TEF-075
1"	1-5/16"	2-5/8"	RG-150NA-100	RG-TEF-100
1-1/4"	1-21/32"	3"	RG-150NA-125	RG-TEF-125
1-1/2"	1-29/32"	3-3/8"	RG-150NA-150	RG-TEF-150
2"	2-3/8"	4-1/8"	RG-150NA-200	RG-TEF-200
2-1/2"	2-7/8"	4-7/8"	RG-150NA-250	RG-TEF-250
3"	3-1/2"	5-3/8"	RG-150NA-300	RG-TEF-300
3-1/2"	4"	6-3/8"	RG-150NA-350	RG-TEF-350
4"	4-1/2"	6-7/8"	RG-150NA-400	RG-TEF-400
4-1/2"	5"	7"	RG-150NA-450	RG-TEF-450
5"	5-9/16"	7-3/4"	RG-150NA-500	RG-TEF-500
6"	6-5/8"	8-3/4"	RG-150NA-600	RG-TEF-600
7"	7-5/8"	10"	RG-150NA-700	RG-TEF-700
8"	8-5/8"	11"	RG-150NA-800	RG-TEF-800
9"	9-5/8"	12-1/2"	RG-150NA-900	RG-TEF-900
10"	10-3/4"	13-3/8"	RG-150NA-1000	RG-TEF-1000
12"	12-3/4"	16-1/8"	RG-150NA-1200	RG-TEF-1200
14"	14"	17-3/4"	RG-150NA-1400	RG-TEF-1400
16"	16"	20-1/4"	RG-150NA-1600	RG-TEF-1600
18"	18"	21-5/8"	RG-150NA-1800	RG-TEF-1800
20"	20"	23-7/8"	RG-150NA-2000	RG-TEF-2000
22"	22"	26"	RG-150NA-2200	RG-TEF-2200
24"	24"	28-1/4"	RG-150NA-2400	RG-TEF-2400

No. FFG - FULL FACE PIPE FLANGE GASKET

Standard thickness is 1/8", also available in 1/16" please specify when ordering.
 Additional ring gasket materials are available, but not listed on this page.



Nominal Pipe Size	150# full face gasket ID	150# full face gasket OD	Non-Asbestos Part #:	PTFE Part #:
1/2"	27/32"	3-1/2"	FFG-150NA-050	FFG-150T-050
3/4"	1-1/16"	3-7/8"	FFG-150NA-075	FFG-150T-075
1"	1-5/16"	4-1/4"	FFG-150NA-100	FFG-150T-100
1-1/4"	1-21/32"	4-5/8"	FFG-150NA-125	FFG-150T-125
1-1/2"	1-29/32"	5"	FFG-150NA-150	FFG-150T-150
2"	2-3/8"	6"	FFG-150NA-200	FFG-150T-200
2-1/2"	2-7/8"	7"	FFG-150NA-250	FFG-150T-250
3"	3-1/2"	7-1/2"	FFG-150NA-300	FFG-150T-300
3-1/2"	4"	8-1/2"	FFG-150NA-350	FFG-150T-350
4"	4-1/2"	9"	FFG-150NA-400	FFG-150T-400
4-1/2"	5"	9-1/4"	FFG-150NA-450	FFG-150T-450
5"	5-9/16"	10"	FFG-150NA-500	FFG-150T-500
6"	6-5/8"	11"	FFG-150NA-600	FFG-150T-600
7"	7-5/8"	12-1/2"	FFG-150NA-700	FFG-150T-700
8"	8-5/8"	13-1/2"	FFG-150NA-800	FFG-150T-800
9"	9-5/8"	15"	FFG-150NA-900	FFG-150T-900
10"	10-3/4"	16"	FFG-150NA-1000	FFG-150T-1000
12"	12-3/4"	19"	FFG-150NA-1200	FFG-150T-1200
14"	14"	21"	FFG-150NA-1400	FFG-150T-1400
16"	16"	23-1/2"	FFG-150NA-1600	FFG-150T-1600
18"	18"	25"	FFG-150NA-1800	FFG-150T-1800
20"	20"	27-1/2"	FFG-150NA-2000	FFG-150T-2000
22"	22"	29-1/2"	FFG-150NA-2200	FFG-150T-2200
24"	24"	32"	FFG-150NA-2400	FFG-150T-2400

No. RGT - RING GASKETS WITH TAB

Standard thickness is 1/8", also available in 1/16" please specify when ordering.
 Additional ring gasket materials are available, but not listed on this page.



Nominal Pipe Size	150# ring gasket ID	150# ring gasket OD	Non-Asbestos Part #:	Vegetable Fiber Part #:
1/2"	27/32"	1-7/8"	RGT-150NA-050	RGT-VF-050
3/4"	1-1/16"	2-1/4"	RGT-150NA-075	RGT-VF-075
1"	1-5/16"	2-5/8"	RGT-150NA-100	RGT-VF-100
1-1/4"	1-21/32"	3"	RGT-150NA-125	RGT-VF-125
1-1/2"	1-29/32"	3-3/8"	RGT-150NA-150	RGT-VF-150
2"	2-3/8"	4-1/8"	RGT-150NA-200	RGT-VF-200
2-1/2"	2-7/8"	4-7/8"	RGT-150NA-250	RGT-VF-250
3"	3-1/2"	5-3/8"	RGT-150NA-300	RGT-VF-300
3-1/2"	4"	6-3/8"	RGT-150NA-350	RGT-VF-350
4"	4-1/2"	6-7/8"	RGT-150NA-400	RGT-VF-400
4-1/2"	5"	7"	RGT-150NA-450	RGT-VF-450
5"	5-9/16"	7-3/4"	RGT-150NA-500	RGT-VF-500
6"	6-5/8"	8-3/4"	RGT-150NA-600	RGT-VF-600
7"	7-5/8"	10"	RGT-150NA-700	RGT-VF-700
8"	8-5/8"	11"	RGT-150NA-800	RGT-VF-800
9"	9-5/8"	12-1/2"	RGT-150NA-900	RGT-VF-900
10"	10-3/4"	13-3/8"	RGT-150NA-1000	RGT-VF-1000
12"	12-3/4"	16-1/8"	RGT-150NA-1200	RGT-VF-1200
14"	14"	17-3/4"	RGT-150NA-1400	RGT-VF-1400
16"	16"	20-1/4"	RGT-150NA-1600	RGT-VF-1600
18"	18"	21-5/8"	RGT-150NA-1800	RGT-VF-1800
20"	20"	23-7/8"	RGT-150NA-2000	RGT-VF-2000
22"	22"	26"	RGT-150NA-2200	RGT-VF-2200
24"	24"	28-1/4"	RGT-150NA-2400	RGT-VF-2400

“O” RING KITS and “O” RING CORD

Solve your “O” Ring replacement problems fast with this kit containing 382 rings in the 30 most popular sizes. Rings conform dimensionally to 568 universal series also AN-6227 sizes. Standard Kit is of 70 durometer Nitrile (Buna-N) compound for oil and fuel resistance - suitable for temperatures from -40° to 250°F. Specify H-70 Kit.

Other kits available:

- H70-M, 401 pc. Buna-N metric O-Ring kit 32 sizes.
- H-90, Buna-N 90 Durometer
- N-70, Neoprene 70 Durometer
- E-70, EPDM 70 Durometer
- PTFE, S-70, Silicone 70 Durometer
- V-70, Viton 70 Durometer
- V-90, Viton 90 Durometer

* Viton is a registered trademark of DuPont Corp.



PRP-568 Universal Series Dash Nos.	AN 6227 Dash Nos. (Size Ref.)	Nominal Size I.D.	Nominal Size O.D.	Width	Number of rings/size
-006	-1	1/8"	1/4"	1/16"	20
-007	-2	5/32"	9/32"	1/16"	20
-008	-3	3/16"	5/16"	1/16"	20
-009	-4	7/32"	11/32"	1/16"	20
-010	-5	1/4"	3/8"	1/16"	20
-011	-6	5/16"	7/16"	1/16"	20
-012	-7	3/8"	1/2"	1/16"	20
-110	-8	3/8"	9/16"	3/32"	13
-111	-9	7/16"	5/8"	3/32"	13
-112	-10	1/2"	11/16"	3/32"	13
-113	-11	9/16"	3/4"	3/32"	13
-114	-12	5/8"	13/16"	3/32"	13
-115	-13	11/16"	7/8"	3/32"	13
-116	-14	3/4"	15/16"	3/32"	13
-210	-15	3/4"	1"	1/8"	10
-211	-16	13/16"	1-1/16"	1/8"	10
-212	-17	7/8"	1-1/8"	1/8"	10
-213	-18	15/16"	1-3/16"	1/8"	10
-214	-19	1"	1-1/4"	1/8"	10
-215	-20	1-1/16"	1-5/16"	1/8"	10
-216	-21	1-1/8"	1-3/8"	1/8"	10
-217	-22	1-3/16"	1-7/16"	1/8"	10
-218	-23	1-1/4"	1-1/2"	1/8"	10
-219	-24	1-5/16"	1-9/16"	1/8"	10
-220	-25	1-3/8"	1-5/8"	1/8"	10
-221	-26	1-7/16"	1-11/16"	1/8"	10
-222	-27	1-1/2"	1-3/4"	1/8"	10
-325	-28	1-1/2"	1-7/8"	3/16"	7
-326	-29	1-5/8"	2"	3/16"	7
-327	-30	1-3/4"	2-1/8"	3/16"	7

No. 1000FG - FIBERGLASS CLOTH, TAPE AND ROPE



FIBERGLASS TAPE

Part Number	Width	Thickness	Standard Length
1000FGT100-116	1"	1/16"	100'
1000FGT150-180	1"	1/8"	100'
1000FGT150-116	1-1/2"	1/16"	100'
1000FGT150-180	1-1/2"	1/8"	100'
1000FGT200-116	2"	1/16"	100'
1000FGT200-180	2"	1/8"	100'
1000FGT300-116	3"	1/16"	100'
1000FGT300-180	3"	1/8"	100'
1000FGT400-116	4"	1/16"	100'
1000FGT400-180	4"	1/8"	100'

Fiberglass tape is typically used for: wrapping steam tracer lines, hose, piping, tadpole tapes, gasketing and curtains for high temperature ovens.

FIBERGLASS ROPE

Part Number	Width	Ft/Lb.
1000FGR100-140	1/4"	54.0
1000FGR100-380	3/8"	24.5
1000FGR100-120	1/2"	13.5
1000FGR100-580	5/8"	9.0
1000FGR100-340	3/4"	6.5
1000FGR100-100	1"	3.7

Fiberglass rope is highly flexible twisted and formed rope in various diameters. Typically packaged on 25 lb. spools which can be broken for smaller orders.

FIBERGLASS CLOTH

Part Number	Width	Thick-ness	Standard Length
1000FGC-60-025 *	60"	.025"	150'
1000FGC-60-035 *	60"	.035"	150'
1000FGC-40-040	60"	.040"	150'
1000FGC-40-063	40"	.063"	150'
1000FGC-60-085 *	60"	.085"	150'
1000FGC-60-125	40"	.125"	150'

(* - Indicates major use is welding protection)

Fiberglass cloth is used for: electrical insulation, heat shields, welding, stress relieving, pad cover insulation, gasket products, fire blankets, fire curtain, expansion joints, flue ducts, etc.. These cloths are woven of highly texturized fiber glass yarns.

Also available as tacky cloth with brass wire inserted and with rubber compound to provide strength and conformability, ideal for manhole, handhole, and tadpole gaskets. Service rating +400°F. Pressure rating 180 PSI.

PROPERTIES OF FIBERGLASS

Material: Will not burn.

Service Temperature: 1000°F (538°C)

Thermal Conductivity @ 73°C: K Factor of .388

Resistance to Abrasion: Good

Resistance to Acids: Good, except hydrofluoric, hot phosphoric and wet hydrogen chloride.

Resistance to Alkalis: Fair to Good

Effect of Bleaches & Solvents: Unaffected.

Resistance to Mildew, Rotting, Aging, and Sunlight: Excellent.

ADDITIONAL PACKING & GASKET MATERIALS

No. SWG - SPIRAL WOUND GASKET



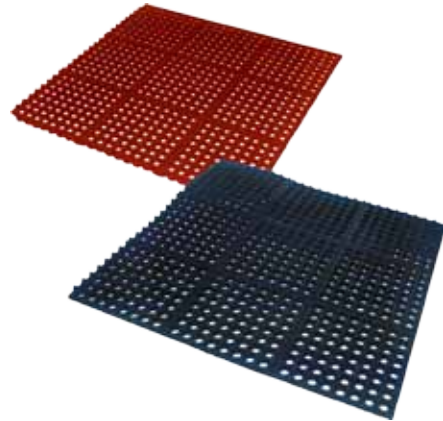
PACKING GASKET CUTTER



RUBBER SWITCHBOARD MATTING



ANTI-FATIGUE GRATING & MATTING



STICKY BACK RUBBER STRIP PACKING

